



Curtain Road, London, EC2A

BUTLER & STAG



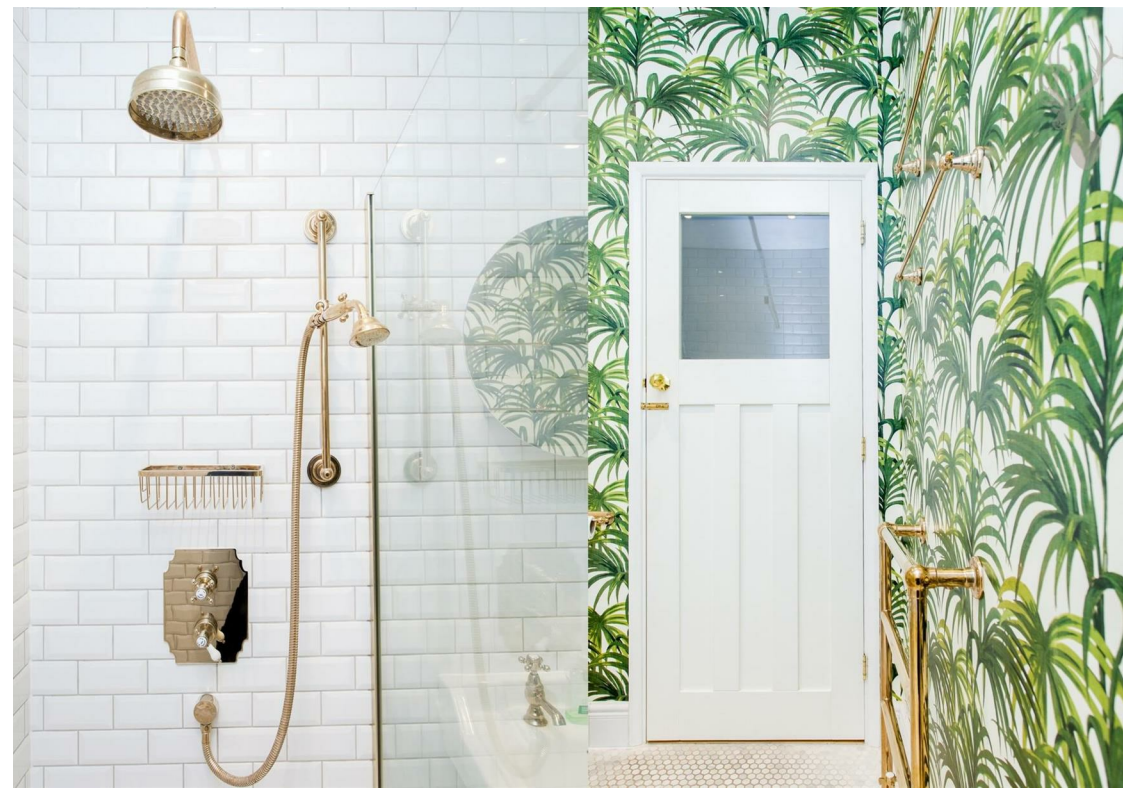
Physical viewings taking place.

Set in the heart of the Shoreditch Triangle is this stunning and larger than average one bedroom second floor warehouse conversion.



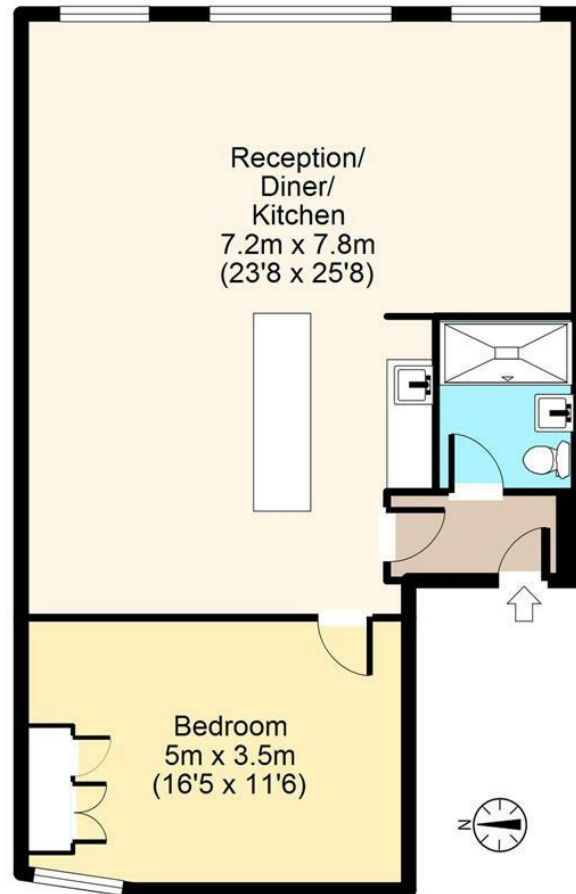
- Rear Facing Double Bedroom
- Warehouse Conversion
- High Ceilings & Exposed Brick Work
- 785 Sq. Ft.
- Second Floor
- Shoreditch Triangle Location





Curtain Road, EC2A

Second Floor



Total area: approx. 73 sq. metres (785 sq. feet)
For illustration purposes only - not to scale
www.londonpropertyassessments.co.uk

IMPORTANT NOTICE - These particulars have been prepared in good faith and they are not intended to constitute part of an offer or contract. We have not performed a structural survey on this property and the services, appliances and specific fittings have not been tested. All photographs, measurements, floor plans and distances referred to are given as a guide and should not be relied upon.

BUTLER & STAG

☎ 020 8102 1236

🏠 508 Roman Road, Bow, London, E3 5LU

✉ bow@butlerandstag.com

www.butlerandstag.uk